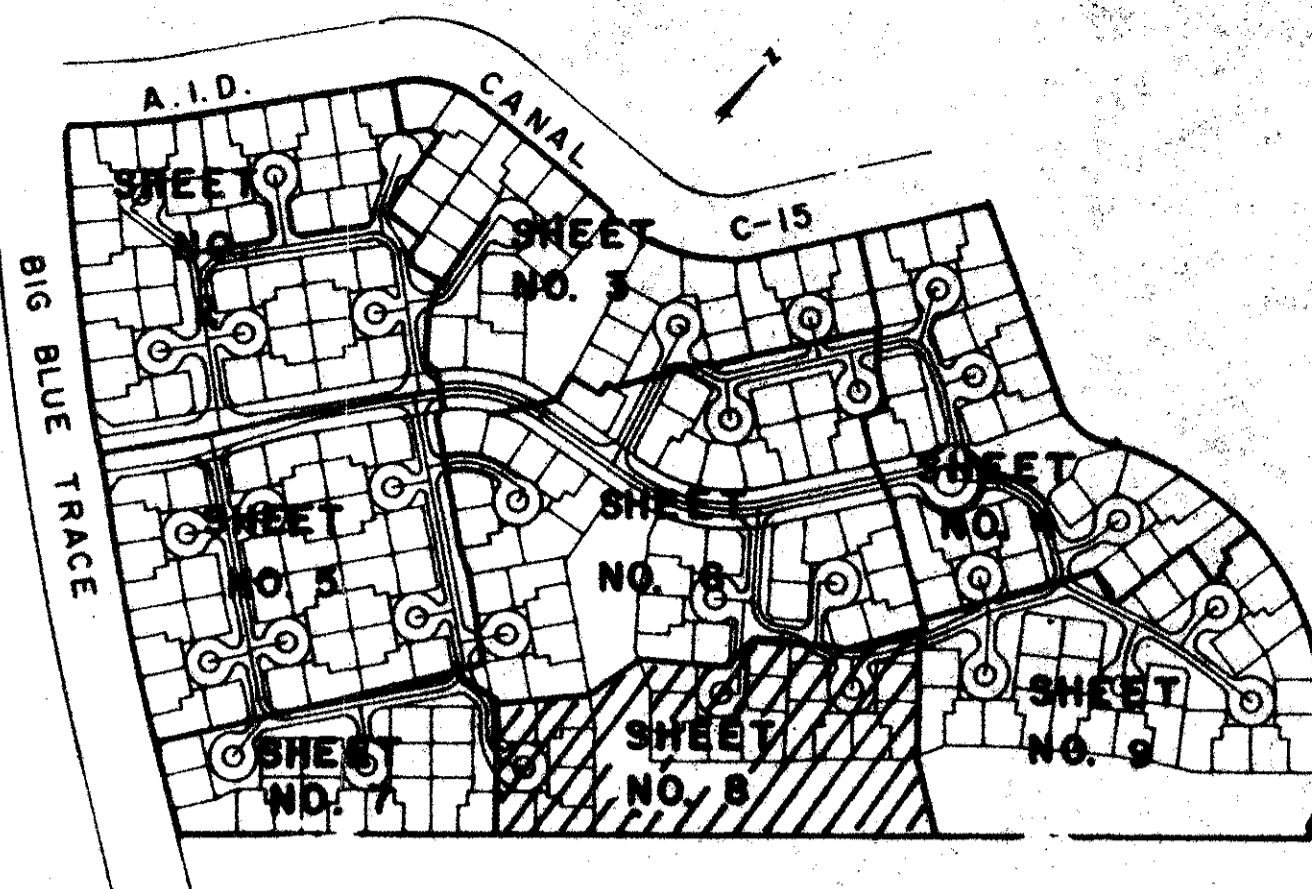
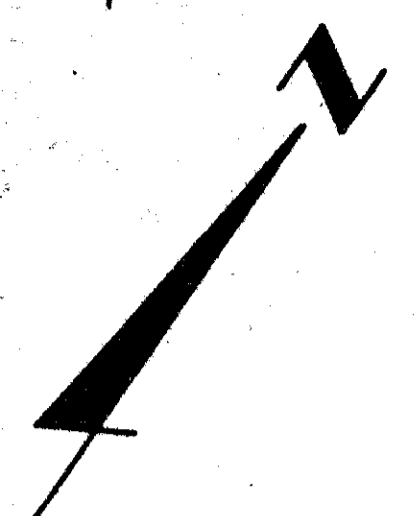
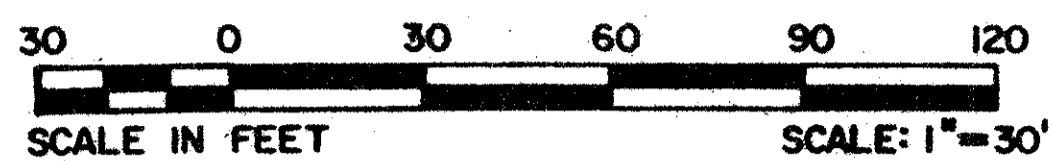


54/65

TRACT 42 - B OF WELLINGTON P.U.D. IN PART OF SECTION 10, TOWNSHIP 44 SOUTH, RANGE 41 EAST PALM BEACH COUNTY, FLORIDA IN NINE SHEETS SHEET NO. 8

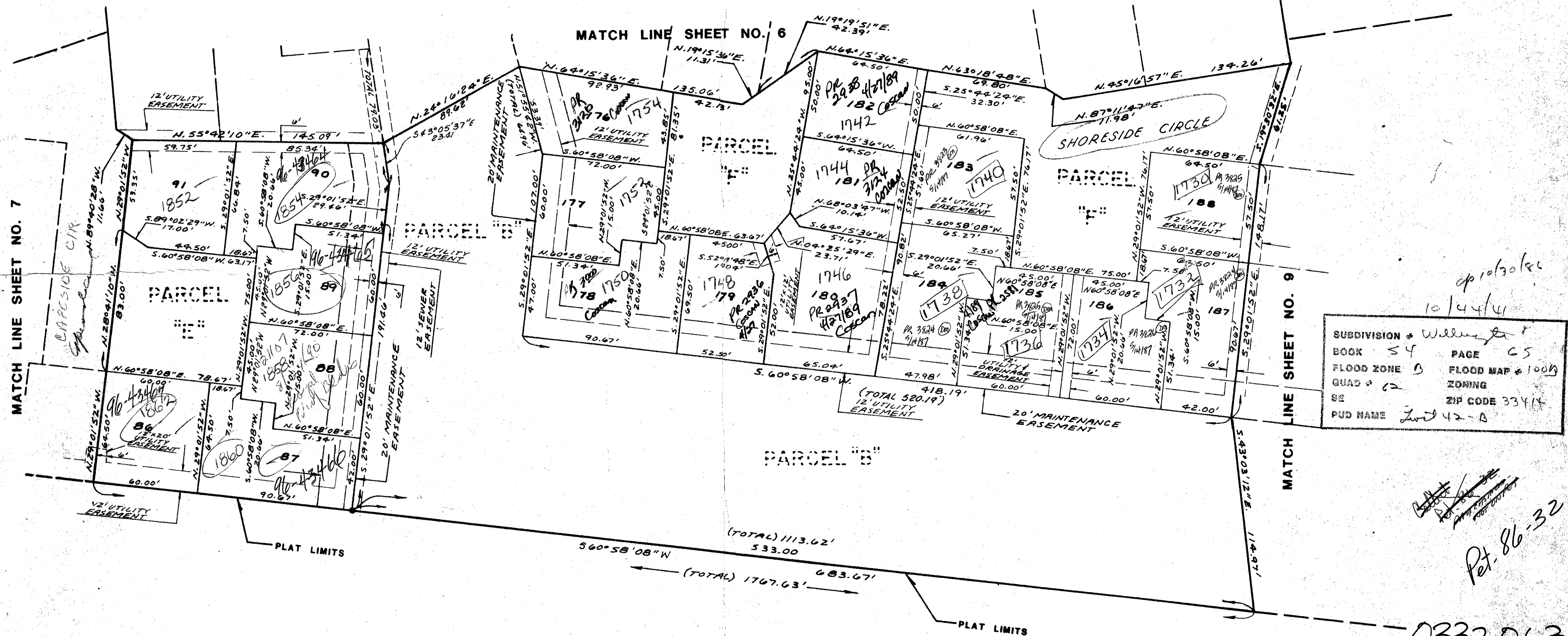
GEE & JENSON
ENGINEERS - ARCHITECTS - PLANNERS, INC.
WEST PALM BEACH, FLORIDA
JANUARY 1986



STATE OF FLORIDA
COUNTY OF PALM BEACH
This plat was filed for
record at _____ M. this day
of _____ 1986, and duly
recorded in Plat Book No. _____
on Pages _____ thru _____
By: JOHN B. DUNKLE
Clerk Circuit Court
D.C.

65

KEY MAP
N.T.S.



SUBDIVISION * Wellington
BOOK 54 PAGE 65
FLOOD ZONE 9 FLOOD MAP # 1009
QUAD # 6 ZONING
SE ZIP CODE 33414
PUD NAME Tract 42-B

10/13/86
10/14/86
Pet. 86-32

0332-063

ADD. BY [Signature]
CHECKED BY [Signature]

54/65

TRACT 42-B OF WELLINGTON P.U.D.

THE SHORES AT
WELLINGTON -- P.U.D.
PB. 42, PGS. 172-174
INCLUSIVE

DRAWING NUMBER

DRAWING NUMBER

DRAWING NUMBER

PLAN-HOLD CORPORATION • IRVINE, CALIFORNIA
REGISTERED PROFESSIONAL ARCHITECT
REGISTERED PROFESSIONAL ENGINEER